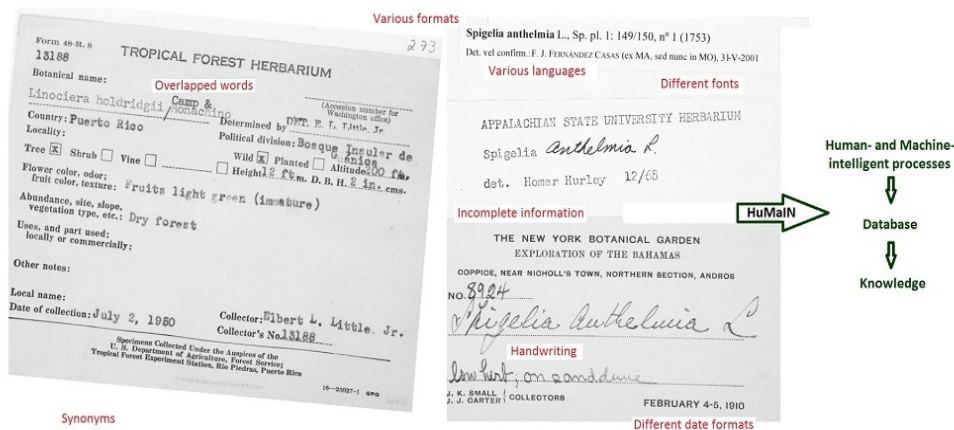


Thank you for helping us in this crowdsourcing task!

The website of HuMaIN is: <http://humain.acis.ufl.edu/>



HuMaIN is funded by a grant from the National Science Foundation's ACI Division of Advanced Cyberinfrastructure (Award Number: 1535086). Any opinions, findings, and conclusions or recommendations expressed in this material are those of the author(s) and do not necessarily reflect the views of the National Science Foundation.

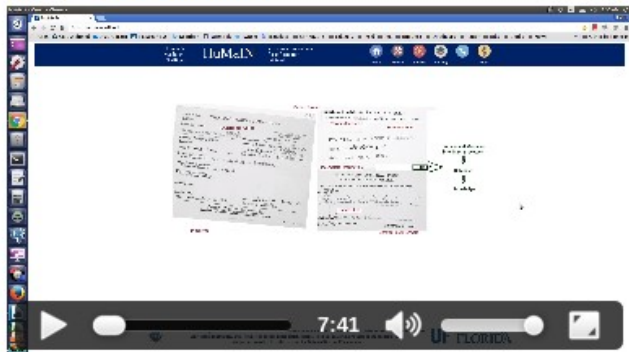


Select the option "HuMaIN" of the top menu to go to the crowdsourcing tasks. You will find the following segment:

- [Cropping the text areas or label of the image:](#)

Please read the [tutorial](#) and watch the videos before helping us in this crowdsourcing task. When you feel ready, [go for it](#).

How to use the interface:



What areas to crop?:




Please watch the videos and then click on the title or on “go for it”.

The screenshot displays the HuMaIN software interface. At the top, there is a navigation bar with the text "Human & Machine INtelligent" and "HuMaIN software components for information retrieval". Navigation icons for Home, Mission, Humain, Catalog, Us, and Help are present. The main area shows a specimen image with a red ruler at the top and a blue crop box. The specimen is a small insect on a piece of paper with handwritten text. The control panel on the right is dark blue and contains the following elements:

- A red "no" symbol at the top right.
- Up and down arrow buttons on the left.
- Section: "Selected coordinates to crop:"
 - Upper left corner: X: 160 px, Y: 120 px
 - Dimensions: Width: 1280 px, Height: 960 px
- Section: "Text segments"
 - Input fields for x, y, width, height and a red "X" icon.
 - "Add new segment" button.
- Section: "Blank areas"
 - Input fields for x, y, width, height and a red "X" icon.
 - "Insert blank area" button.
- "Save and Next" button at the bottom.

At the bottom of the image area, there are left and right arrow buttons. Below the image, there is a funding notice from the National Science Foundation and the University of Florida logo.

Interface recommendations and comments:

- Use Google Chrome.
- The monitor size needs to be sufficient. There are going to be some interface problems (objects overlapping) if the browser area is small.
- The provided buttons for zoom in/out are slow. I prefer to work with the scroll wheel of the mouse: Up → Zoom in, Down → Zoom out.
- The movement buttons are also slow. I prefer to double click on the image and drag it to the desired place. Double click again to disable the dragging option.
- Sometimes, the initial size of the crop box is very different to the target area and it is faster to click and drag on the image to discard the previous box and creating a new one on the desired place.
- Use the button at the upper right corner of the image:  to return the crop box and the picture to their initial state.

Cropping text:

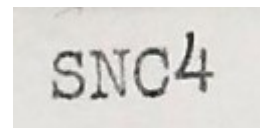
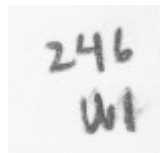
- Because the objective of the project is extracting the information from the labels, we are not interested in the image of the specimen, any draw, map, or the information of the institution where the specimen is right now. For example, we are not interested about information like the following:



OR



- Sometimes these logos and information are going to be inside the cropped label: this is what we want to be specified as a blank area.
- Omit small annotations like the following:



- You can put together several text areas in one single crop segment. For example, in the next image, you could make a single crop which includes the four pieces of paper.



- In this last image, you should omit the text (scientific name) at the left bottom part of the image, because this was inserted by the organization that has the specimen nowadays.

If you have any doubt, please send us an e-mail to ialzuru@ufl.edu